

THE FOLIO

MONA HUSSEIN DESIGN HOUSE

www.monahussein.com

www.mahally.net

2013/2014 - Vol. 2

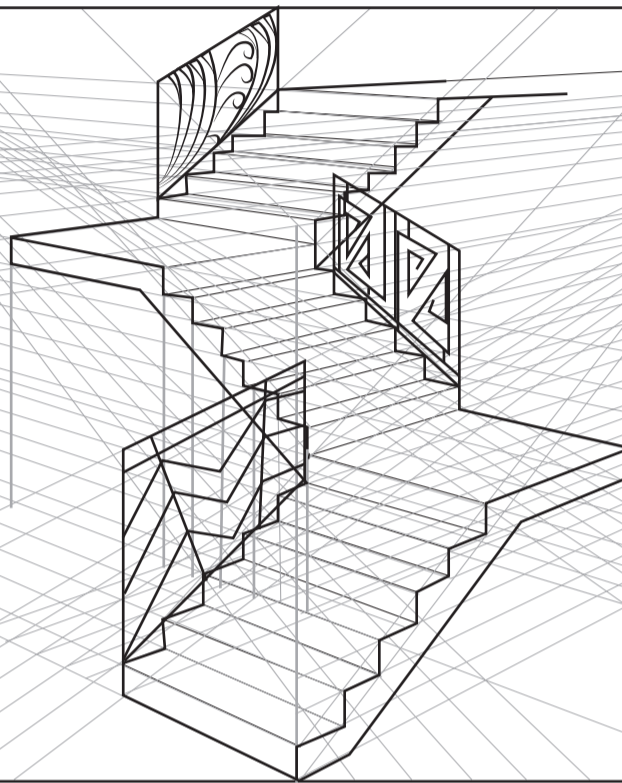
He can see stairs.

She can see illusion.

You can see perspective.

They can see a stairway to heaven.

We see DESIGN.



www.monahussein.com

MHDH
MONA HUSSEIN DESIGN HOUSE

Page 17

Your career path starts with
MONA HUSSEIN DESIGN ACADEMY

Page 28

Your new home solution:
MAHALLY FURNITURE PACKAGES

Page 16

GOLD A'DESIGN AWARD TO MONA HUSSEIN



See inside
CRYSTAL ASFOUR
Modern and Classic Interior. Page 4-5

03

Landscape

04

Crystal Asfour

06

Private Residence

08

Arts and Crafts Workshop

09

Tag Sultan

12

T.G.I Fridays

14

Branding

16

Awards

17

Design Academy

21

Symposium II

22

Booths

23

Heba Linens/Mahally

24

Mahally 2014 Collection

26

Furnishing & Finishing

27

Celebration

28

Sneak Peek

30

Design in Egypt

31

Our House

مها

ميت الف فرسه عشان اسيب مصر ولا عمري سبتها
 عشان هي بلادي اللي بجد بحبها
 بحبها بكذبها ومدقها
 بحب فيها امالة وندالة اهله
 بحب فيها السهر بحب زيفها واملها
 بحب فيها طلعة الشمس تنهر وشها
 بحب فيها القمر طالع يغازل حسنها
 بحب فيها المشي علي شط نيلها وبحرها
 بحب فيها بناتها راسمين ملامح شعبها
 دي بنت مايمه وحاطه ووده ف شعرها
 ودي بنت جد ونازله جري لشغلها
 هتلاقي فين بلد فيها الكنيس والجوامع بتحضن بعضها
 مسلم مسيحي اخوات راضعين طيبة من صدرها
 نبع الحنان ويناموا حاضنين ارضها
 هتلاقي فين ثاني بلد كل حاجه فيها تخليك تحبها
 هتقوللي ظالمه هقولك برضه بحبها
 هتقوللي ظالمه مهمه ده سواد شعرها
 هتقوللي زحمه هقولك عشان بنعشق ارضها
 هتقوللي فيها فساد هقولك ده من طيبة شعبها
 جرب كده تسهر وله وحدك علي صف نيلها وحبها
 جرب تشوف بنت حلوه مع شاب واقف جمعها
 بيحبها شايل في قلبه هموم الدنيا كلها وبرضه بيحبها
 جرب كده تاكل دبه وترمس علي شطها
 وتشوف وشوش الناس واضحك زيها
 طب وانت ماشي له حدك ووقعت في مشكله
 مش بتلاقي الف واحد جمعك بيحلمها
 لا تعرفهم ولا يعرفوك بس جمعكم حبها
 اهي هي دي مصر زاحمه ظالمه فاسده ظالمه
 مش مهم ده كفايه خفت دمها
 هافضل لمصر اقول وا عيد
 انا اصلي عاشق ارضها

غير معروف



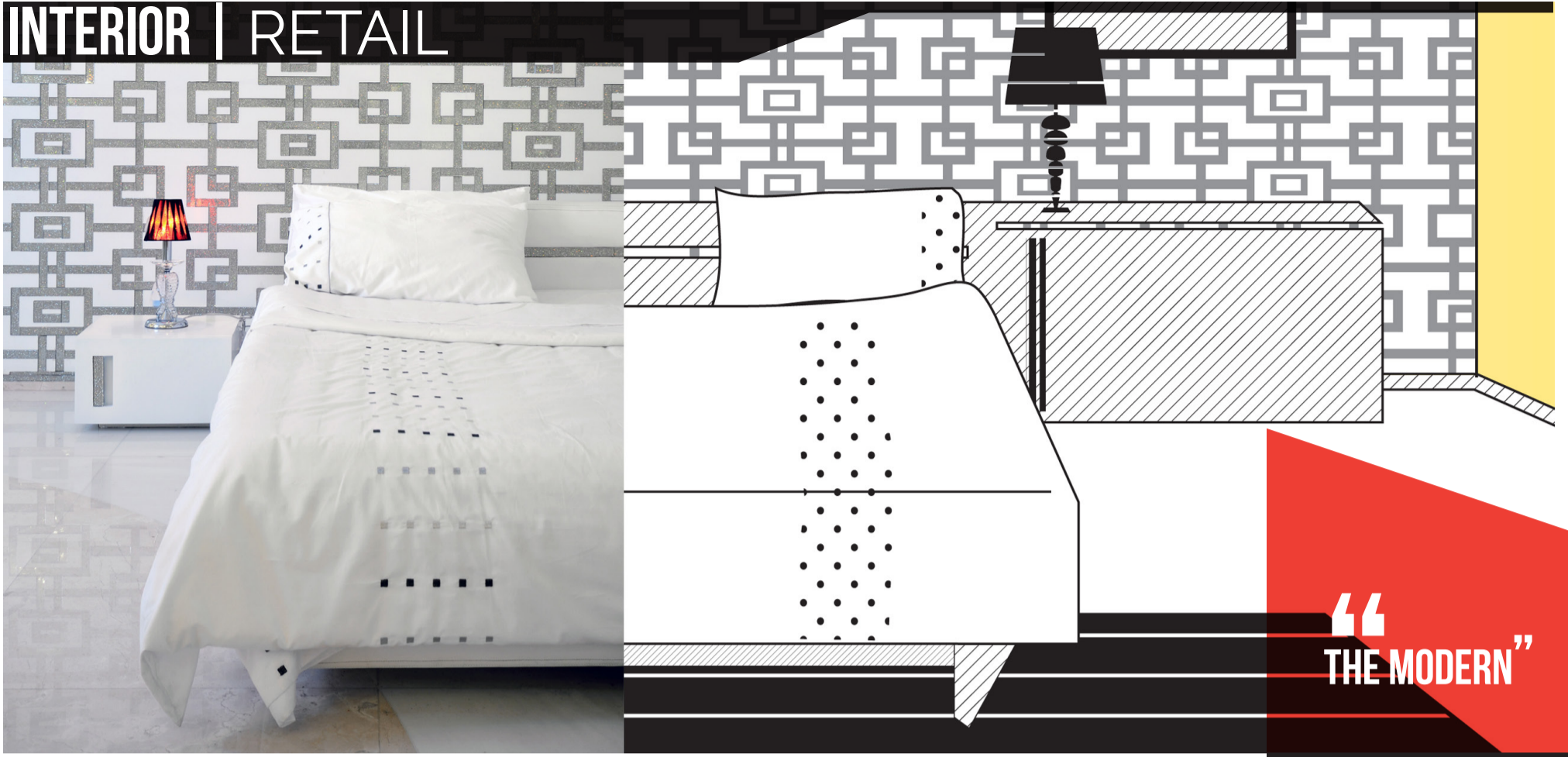


**HACIENDAS, NORTH
COAST, PRIVATE
VILLA**

If you still haven't had a taste of **SERENITY**, then we think you should take a look at this North Coast summer home. Aqua blue pool, huge lounging sofas and chairs, not to mention the secluded seating areas on the cusp of the garden for sunset reading sessions are all you need in your getaway destination.



في تصميم هذا المنزل الساحلي يأتي المعنى الحقيقي للصفاء
و الاسترخاء حيث الجلوس في هدوء وقراءة الكتب المفضلة و
مشاهدة غروب الشمس هو كل ما تحتاجه في هذا المكان الخاص .

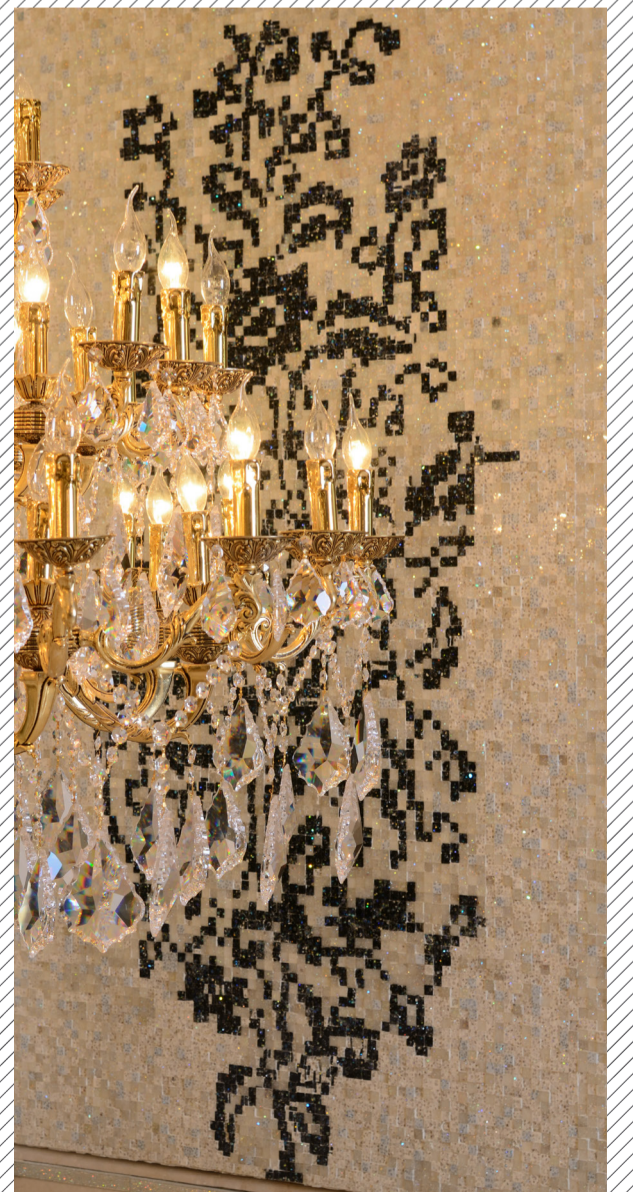


CRYSTAL ASFOUR MODERN & CLASSIC SHOWROOMS, BARON MALL

One of the world's largest crystal companies' mega showroom was designed for two collections, the modern and the classic. MHDH was able to accommodate those two panaches, both based in black, white and grey with hints of lilac in different contexts. The ability to give each lighting collection its own **IDENTITY** is the success of this project.



معارض كريستال عصفور المودرن والكلاسيكي في البارون سنتر تم تصميم احدى أكبر مالات عرض للكريستال في مصر من قبل بيت تصميم منى حسين و قد نجحت في خلق التناغم باستخدام الاسود والابيض والرمادي مع لمسات من الارجواني الفاتح .



HACIENDA, NORTH COAST, PRIVATE VILLA

Ultimately stylish, are the two words that describe this fashionable and avant-garde summer home, definitely a **TREND SETTER HOUSE**. Grey is the new brown if you haven't heard and MHDH used it here to modernize this summer house. Grey floors, endless white walls and furniture with fruitful Missoni splashes and ultra-modern arrangements are what transform this house into a lively home.

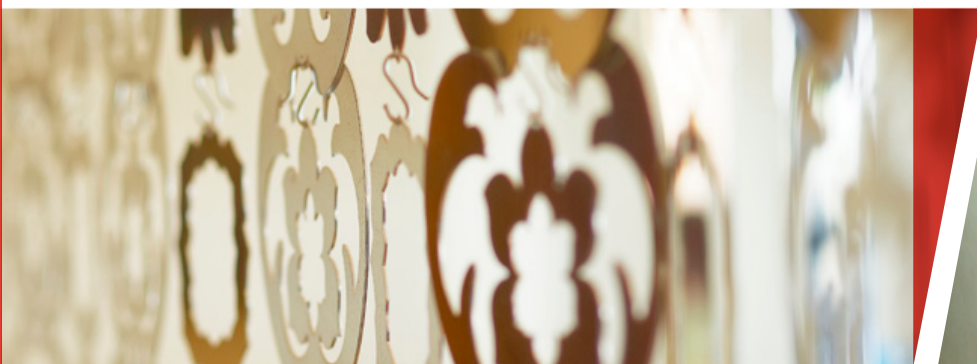


الموضة والعصرية هما أفضل ما يوصف به هذا المنزل الواقع على الساحل الشمالي، الإرضيات الرمادية و الجدران البيضاء والترتيبات الأنيقة حولت هذا البيت إلى منزل مفعم بالحياة و النشاط .

KATAMEYA HEIGHTS, NEW CAIRO, PRIVATE VILLA

MHDH delivered a style that provides luxury and comfort with a mix of **OLD AND NEW** design trends. The wooden cladding and dark walls help define a cozy comfortable space while the hints of color in decorative items add enough zest to this humble home.

The philosophy lies in mixing our clients old furniture with our new concepts and designs to create a timeless and beautifully simple lifetime home.



نجح بيت تصميم منى حسين في تقديم نمط متجانس يبرز التزاوج السحرى بين الخطوط المعاصرة و الروح الكلاسيكية و التناغم بين عناصر التصميم فى كل ركن فى المنزل .

MONA HUSSEIN AND JOTUN AT BANATY ARTS AND CRAFTS WORKSHOP

On Monday July 29, 2013 Mona Hussein Design House staff and designers visited and brought joy to 40 children from Banaty Foundation. The Foundation provides support and habitation for street children and Mona Hussein Design House is honored to be a part of the children's family.

The workshop started at 11 am with a brief presentation about color theory by our creative director, Nourane Abdel Latif. The fun part was coming ahead, and we were ready for a painting mayhem, with the activity being painting on wooden café chairs. Jotun participated with our design house and gave us a variety of 16 colors and paintbrushes to accommodate for the 40 kids.

Our talented designers were there to encourage creativity, and giving inspiration. Despite the hot weather the children managed to attentively complete the painting of the chairs with great teamwork followed by a group photo session. The kids were able to keep the chairs to add color in their rooms and add sunshine in their life. Our presence on that day brought much happiness to the children. MHDH would like to thank Jotun for their generous donations.

قام بيت تصميم منى حسين بزيارة مؤسسة بناتى للقيام بعمل
رسم على الكراسى الخشبية. شاركت شركة جوتن معنا وقدمت
مجموعة متنوعة من الدهانات المختلفة تكفى اربعين طفلا.
تقدم مؤسسة بناتى الدعم والسكن لاطفال الشوارع ويتشرف
بيت تصميم منى حسين ان يكون جزء من هذا العمل العظيم .



THE WINNING CHAIR
by Nesma, Donia and Norhan

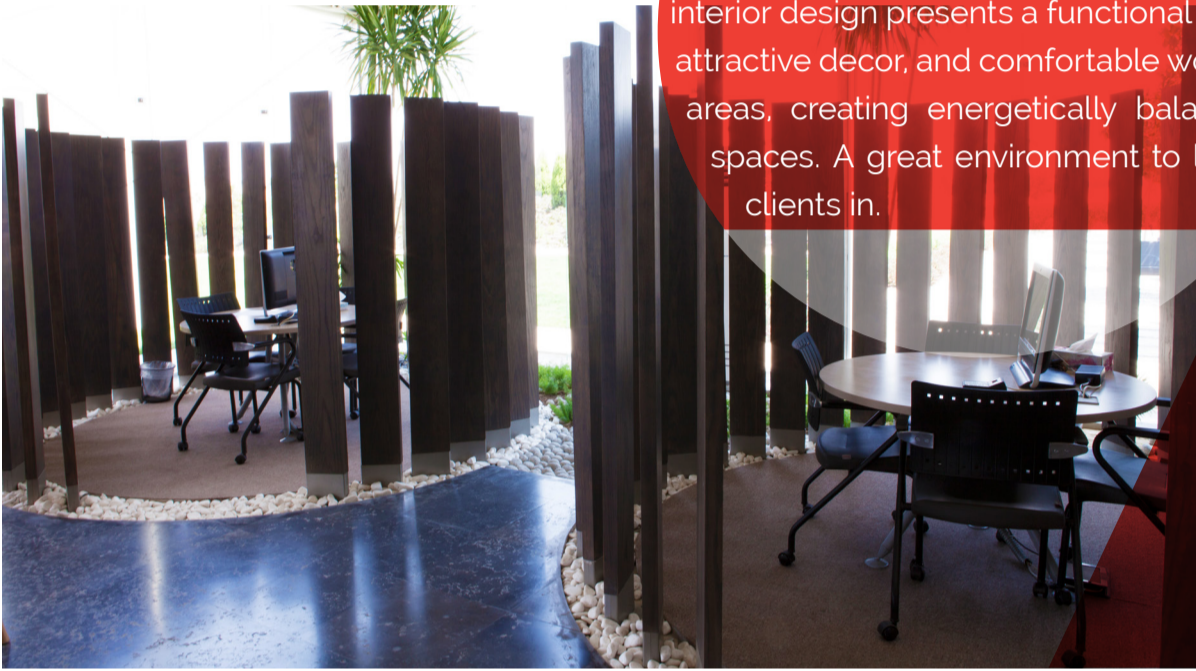
banati
Banat El Ghad



ALFRESCO ATMOSPHERE AT TAG SULTAN SALES CENTER



Beyond the benefits of natural day light, Tag Sultan glass house sales center generates positive energy. The interior design presents a functional mix of attractive decor, and comfortable working areas, creating energetically balanced spaces. A great environment to lure clients in.



التصميم الداخلي لمركز مبيعات تاج سلطان يقدم مزيجا من المساحات المتوازنة لمختلف النشاطات ومناطق عمل متناغمة لحياة منتجة و مريحة.



GIVE YOUR WALLS AN INSPIRING NEW LOOK



Mona Hussein

Bring new life into your home with Lady Design from Jotun. Choose from our brilliant new collections to create stylish wall designs—each paired to a range of décor options by interior designer Mona Hussein.



Pick up the Jotun **Lady Design** book at your nearest Jotun shop. To find out more visit facebook.com/jotun-Egypt or jotun.com/me



**CHANGE TO BRILLIANT DESIGNS
CHANGE TO THE NO. 1 IN PAINTS**

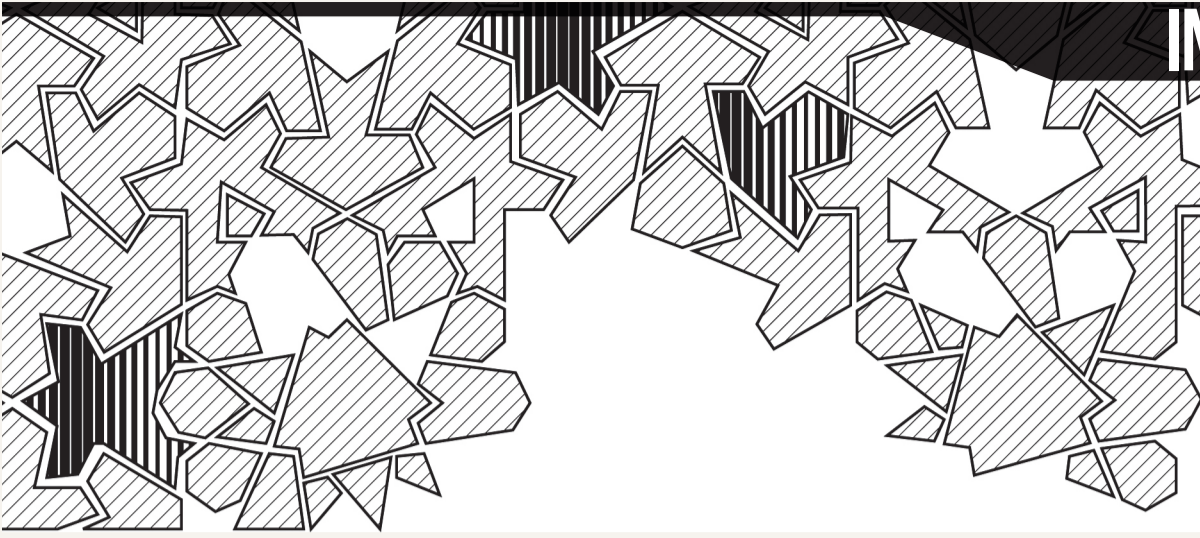


REVAMP OF T.G.I. FRIDAY'S

This project is the epitome of fast food 'dining', with hundreds of chains world-wide, MHDH design house has interior designed the new T.G.I. Friday's in Cairo. The symbolic branding of this food chain has been adopted yet adapted to contemporary textures, materials and layouts. Being a manual guided project, the design had to encircle the riff raff decorative style that it is most famous for, but has been playfully modernized to give their traditional look an avant-garde **REVAMP.**



قام بيت تصميم منى حسين بتجديد سلسلة مطاعم فرايداي
الأكثر شهرة لإعطائه نظرة جديدة مع الحفاظ على طابعه الخاص.



TOPAZ RESTAURANTS OFFERS UNIQUE DINING EXPERIENCE

It's where dining meets artistic experience. From branding to interiors, Mona Hussein Design House created a contemporary yet hip atmosphere by using old motifs and deconstructing them into modern pieces.



بيت تصميم منى حسين قام بعمل التصميم الداخلى
و الديكور لمطعم توباز و خلق الطابع الخاص به وذلك
باستخدام الخراف القديمة و مزجها بأسلوب معاصر.



MHDH realized through experience with retail, commercial and hospitality projects that any interactive property (that has an owner-product-client based relationship) must represent itself with a unique identity to attract and maintain its clientele.

The secret to successful products and places is not based on luck or charm but rather the extensive study of the one way relationship between client and product. Who buys it? Who goes? What is it? Who is it? Where is it? An adequate rhetoric must be in order. Our in house graphic and marketing teams strive in correspondence with our interior designers to ensure

harmony between branding, interior and exterior design. The companies we have worked with on both the branding and interior of their projects have praised this artistic point of convergence having made their life easier. MHDH team huddles closely until they shape the project into existence.

- 01** TOPAZ RESTAURANT
- 02** MAHALLY



JOTUN COLLABORATION WITH MONA HUSSEIN IN THEIR NEW LADY DESIGN COLLECTION

Jotun revolutionizes their wall design paints segment with the recent launch of their Lady Design Collection.

Lady Design offers six new collections that are based on the latest market needs and trends that were created in collaboration with interior designer Mona Hussein.

"With Lady Design we've come up with a great idea, and created an alternative means to an end for today's modern homeowners. The main elements of interior design are color and texture - and we have a concept that offers both in the form of



contemporary wall paint techniques. Walls have a huge impact on the impression a space makes...they dictate the dynamic of a room. And with the Lady Design Collections you can bring your walls, and your individuality, to life", styled Mona.

Elegance, Galleria, Historic, Modern, Natural, Oceanic are the six Lady Design Collections, Jotun offers a total of 30 wall designs with different style, color, texture and inspiration - ensuring a look for every personality.

تم إعداد تصاميم الحائط ليدي ديزاين من جهتنا بالتعاون مع منى حسين و تتكون من ستة مجموعات مختلفة النمط، اللون، الملمس والإلهام لتكون ملائمة لكافة الأذواق.

WATCH US ON
 [MonaHusseinDesign](#)



TRENDING
MONA HUSSEIN
DESIGN HOUSE
FALL' 14 COLOR
MOOD



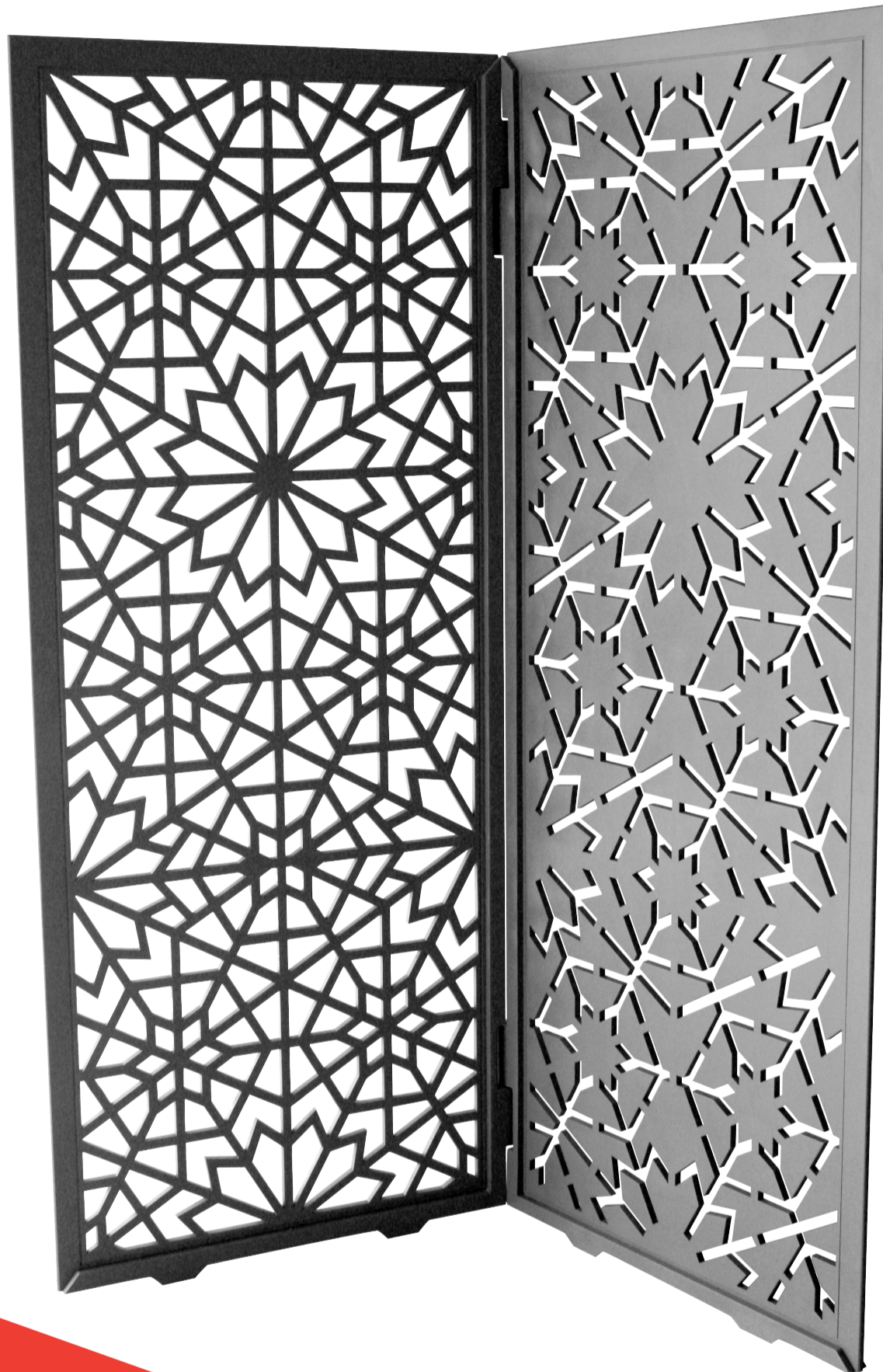
POSITIVE AND NEGATIVE PARAVENT BY MONA HUSSEIN WINS A GOLD AWARD IN THE A'DESIGN AWARD COMPETITION IN THE FURNITURE, DECORATIVE ITEMS AND HOMEWARE DESIGN CATEGORY, 2012 – 2013



Positive and Negative paravent is what you can call Functional Art. The cultural Arabian pattern is laser cut out of Corian material mixing the traditional with the contemporary. The name of the product represents how the effect of subtracting and adding shapes can be for both artistic and functional purposes.

The concept behind the design of this paravent is to elegantly seclude and preserve privacy while maintaining the idea of an open space, which is inspired by the concept of the «Mashrabiya»; a historical and integral part of Islamic architecture. The geometric pattern used is adapted and inspired from the rich cultural heritage of the Arabian world and craftsmanship.

The benefits of the Corian material are that it is a resistant, smooth surfaced, air-quality friendly, sustainable, easily formed to any shape, and can be functional indoors and outdoors.



حصل هذا البرافان المصمم بواسطة منى حسين على الجائزة الذهبية في مسابقة A design award فئة تصميم الأثاث والأدوات المنزلية لعام 2012/2013 و تصميمه مستوحى من مفهوم «المشربية» من التراث الثقافي الاسلامي.

“**THIS SPECIFIC PARAVANT IS DEAR TO ME, BECAUSE IT CAME SO EASILY AND WAS PRODUCED LIKE IT WAS MEANT TO BE. I WAS FIDDLING AROUND WITH THE PATTERN UNTIL IT TURNED INTO WHAT IT IS TODAY. KIND OF LIKE A MILD SERENDIPITY**”



INTERNATIONAL ASSOCIATION DESIGNERS

Mona Hussein is a member of the International Association Designers. The IAD is a worldwide organization of leading designers, artists, architects, craftsman and creative culture. The motto of the IAD is design to advance and benefit mankind. IAD is an international, non-governmental, non-partisan, independent, private club that offers benefits to its members who share the common missions and goals of the organization.

أصبحت منى حسين عضو في الاتحاد الدولي للمصممين. «IAD» هي منظمة عالمية من كبار المصممين والفنانين والمهندسين المعماريين والحرفيين والابداعيين من جميع أنحاء العالم.



MONA HUSSEIN
DESIGN ACADEMY

DEBUT OF MONA HUSSEIN DESIGN ACADEMY SPREADING DESIGN OVER EGYPT

Mona Hussein Design Academy specializes in interior design, landscape and decoration education. It offers a wide range of in-depth design related courses each of which have been specifically developed by industry expert Mona Hussein and her team to respond to the market demand. The courses are recognized to give apprentices a jump start to begin their new career in interior design. Through the courses we fully prepare design learners to take on active roles to help them achieve their full potential, both practically and creatively.

This academy helps the new generations become aware of the quotidian interior design work cycle and guiding students to avoid rookie mistakes.

BRIEF

MHDA is institutionalized to inform and educate on anything that encompasses interior design. The benefit of this course is that there are no architecture or interior qualifications needed to apply, which means that this is not a technical course.

SELECTED ASSOCIATES

3 brotherslighting
The Design Emporium.....Curtains and fabrics
Jotun.....Painting
Marmonil.....Marble / Granite
Duravit.....Bathrooms
Homes.....Kitchens
Floors & MoreFloors
Digital Com.....Automation
Sams InternationalMosaic & Tiles

TIME AND PLACE

The estimated time for the course is from February 2014 until April 2014 with a limit of 30 apprentices and will occur every Saturday from 11:00am until 2:00pm in Gallery Masr, Zamalek.

CERTIFICATE

All the students will receive a certificate signed by all the associates and Mona Hussein.

HOW TO APPLY

Send us an email at designer@monahussein.com with "Academy" in the subject and we will reply with the necessary details and the registration form.

COURSE CONTENT

The syllabus consists of a mixture between both practical and theoretical lectures as well as presentations by suppliers in the field. The course includes a case study for all the stages as an example for the processes of interior design of a private villa.

- I. How & where to meet the client
- II. How to conduct the client questionnaire
- III. How to prepare for the conceptual design
- IV. How to present the conceptual design
- V. How to prepare the Schematic Design
 - * Final architectural & furniture layout
 - * Conceptual ceiling & lighting layout
 - * Preliminary wall elevations for decorative areas
 - * Preliminary floor design
 - * Presented drawings for bathrooms
 - * Coordinating with MEP & automation consultants
 - * Kitchen preliminary proposals from different suppliers
- VI. How to present the schematic design to the client for approval & comments
- VII. How to develop the final Design Development
 - * Final architectural layout
 - * Final furniture layouts
 - * Electromechanical package
 - * Flooring designs & details
 - * Bathroom detailed designs
 - * Elevations for decorative walls
 - * Wall finish materials
 - * Fixed details wooden package.
 - * Sanitary ware & Lighting fixture B.O.Qs
- VIII. How to prepare F.F&E package that includes loose furniture, curtains, carpets, fabric selection & accessories

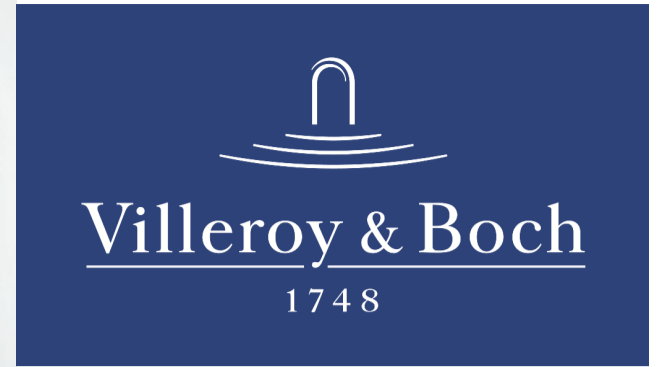


تقوم منى حسين بافتتاح « منى حسين ديزاين اكاڊمى » المتخصصة في التصميم الداخلي والديكور. تشمل مناهج الاكاديمية خليط بين المحاضرات النظرية و العملية ومحاضرات من أشهر المودرن في الاسواق العالمية والمحلية في كل المجالات. وتتضمن الدورة دراسة جميع المراحل للتصميم الداخلي لفيللا خاصة. تبدأ الدورة في شهر فبراير 2014 في معرض «جاليرى مصر» بالزمالك.



*LA BELLE bathroom collection LA FLEUR tap fittings programme
ONE & ONLY tiles*

*LA BELLE
THE NEW ELEGANCE OF
THE ROMANTIC*



the
SPIRIT
of
WATER



DEQUE



Head office & showroom

10 Soliman Abaza St., Mohandiseen,
Giza Egypt
Tel.:(+202) 3760 1892 - 3336 4712 / 3
Fax:(+202) 3760 2031

Heliopolis Showroom

13 El Nozha St., Heliopolis, Cairo,
Egypt
Tel.:(+202) 2290 7699 - 2290 7694
Fax:(+202) 2290 7670

Mona Hussein Design House cooperates with Aquatop in her projects as their product range caters to low, medium and high end price choices joined with moral work ethics and consumer loyalty.

TOTO®



COMFORT AND HIGH-TECH COMBINED

NOW IN EGYPT



Luxury Bathrooms & Kitchens
ISO 9001

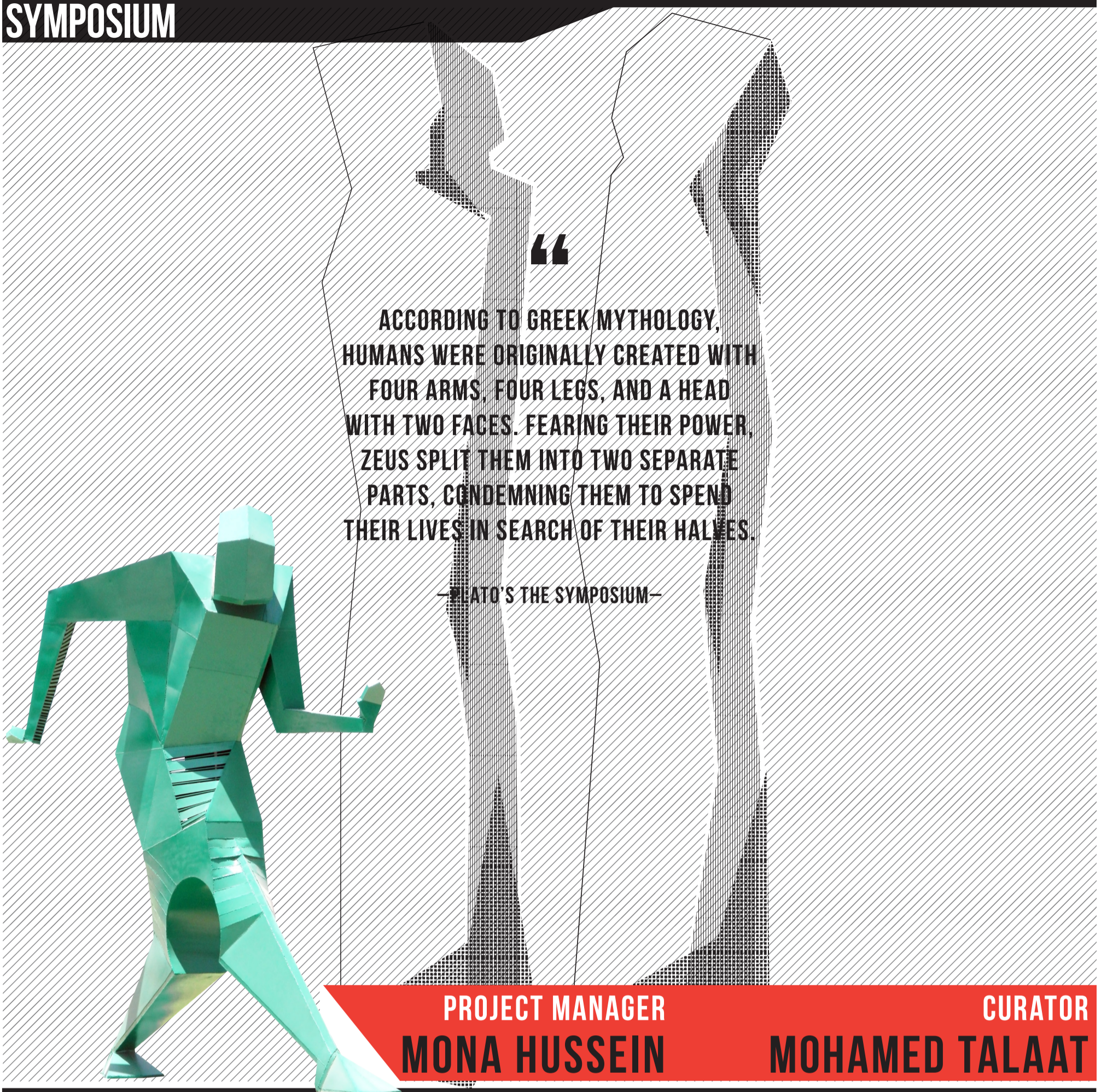
Head office & showroom

10 Soliman Abaza St., Mohandiseen,
Giza Egypt
Tel.:(+202) 3760 1892 - 3336 4712 / 3
Fax:(+202) 3760 2031

Heliopolis Showroom

13 El Nozha St., Heliopolis, Cairo,
Egypt
Tel.:(+202) 2290 7699 - 2290 7694
Fax:(+202) 2290 7670

SYMPOSIUM



“

ACCORDING TO GREEK MYTHOLOGY, HUMANS WERE ORIGINALLY CREATED WITH FOUR ARMS, FOUR LEGS, AND A HEAD WITH TWO FACES. FEARING THEIR POWER, ZEUS SPLIT THEM INTO TWO SEPARATE PARTS, CONDEMNING THEM TO SPEND THEIR LIVES IN SEARCH OF THEIR HALVES.

—PLATO'S THE SYMPOSIUM—

PROJECT MANAGER
MONA HUSSEIN

CURATOR
MOHAMED TALAAT

THE SYMPOSIUM I

A REVOLUTION INSPIRED PROJECT INCORPORATED WITH RESIDENTIAL LANDSCAPE TO ADD A KALEIDOSCOPES OF COLOR, CULTURE AND MEANING TO THE STREETS AND THE INHABITANTS OF SODIC.



THE SYMPOSIUM II

The Mona Hussein and SODIC joint art and culture collaboration launched their art Symposium event in October 2012, only this time it was presented in a progressively innovative manner while maintaining the original initiative of the previous symposium, which was a project designed to give birth to expression through art post the Egyptian revolution. The driving force behind the second symposium is functional art which is the creation of sculptures in the form of outdoor seating units from original Egyptian marble. Upon completion, the benches were dispersed and placed around Sodic's landscape for home owners to freely use and enjoy. These seating units add to the aesthetic value of SODIC properties and inspire appreciation of initiative ,and simplicity.



Mona Hussein and Mohamed Talaat are always ready when it comes to art, creativity and modernity. They worked together and launched the first art symposium in 2011, then merged their powers once again and launched the second functional symposium in 2012; both were a grand success.

قام الفنان التشكيلى محمد طلعت بالاشتراك مع منى حسين بعمل سمبوزيوم لسنة 2012/2011 ، و هما على استعداد تام لتنفيذ كافة الاعمال الفنية و التماثيل والمنحوتات و الفن التشكيلى .

BOOTHS

SOMA BAY BOOTH

Minimalism is the inspiration behind Soma Bay's City Scape trade show booth designed by Mona Hussein Design House. Soma Bay's modernized rebranding was reflected in the design of the booth. Black and white dominated the platform, creating sleek lines against their signature turquoise blue.

قام بيت تصميم منى حسين بتصميم قاعة سوما باي في المعرض التجاري سيتي سكيب بمنتهى البساطة بواسطة خلق خطوط انيقة من الأسود والأبيض و تدخلها مع الأزرق الفيروزي.



TAG SULTAN BOOTH

The indirect lighting, the garden-like layout, the color combination, the creative discipline in the architecture, and interior design of Tag Sultan City Scape trade show booth designed by Mona Hussein Design House impressed attendees. The set up represented the company, its services and corporate identity in an elegantly bold way.



عن طريق الإضاءة الغير مباشرة و مزج الالوان و ابداع التصميم الداخلي الذي ابهر الحافرين، نجح بيت تصميم منى حسين بإباز قاعة تاج سلطان في المعرض التجاري بطريقة جديّة

HEBA LINENS SHOP ENTIRELY FURNISHED by MAHALLY

Modern and easy is what this bedding and linens boutique is all about. The storage solutions are fun, catchy and suitable for the stores disposition and brand identity. The simplicity in the pastel colors is balanced by grey that subdues and matures the candy colored accents.



اعتمد التصميم الداخلي لمجموعة محلات هبة لينينز على البساطة و الوضوح لعرض المنتجات بشكل مغري كما ان الالوان المستخدمة مناسبة جدا لعرض المنتجات .

PERSONAL-IZED / CUSTOM-IZED CHANDELIER

The 'personalized / Cultural Chandelier' by Mona Hussein has a Middle Eastern charm that would warm up and give life to any contemporary space. Composed of dangling brass palms, circles, stars, rings, and crystals upgrades this decorative lighting unit into lighting art.

are h190cm by w160cm and can be customized to suit your desired dimension. The charms can also be **CUSTOMIZED** to other various cultural symbolisms such as the Moroccan, Chinese, or European celebrations.

The palm shaped amulet is a popular symbol in the Middle Eastern and North African cultures symbolizing protection from the evil eyes of the world. This symbol predates Christianity and Islam, it is also historically known as the hand of Fatima, so named to commemorate Muahmed's daughter Fatima Zahra, also Levantine Christians call it the hand of Mary, for the Virgin Mary. The product dimensions

معمت هذة النجفه على غرار الرموز الشعبية المستوحاه من الشرق الأوسط وشمال أفريقيا من التارة و الاشكال المستديرة والكف الخماسي الذي يرمز الى الحماية من عيون الحسد و الشر. يمكن تنفيذها بابعاد مختلفه لتناسب اى مكان وتميمها برموز مختلفه لتناسب الثقافات و الشخصيات الاخرى كالمغربية اوالمينية او الاحتفالات الاوروبية.



Cultural Chandelier
Brass chandelier
MH LF CH 02



MAHALLY 2014 COLLECTION



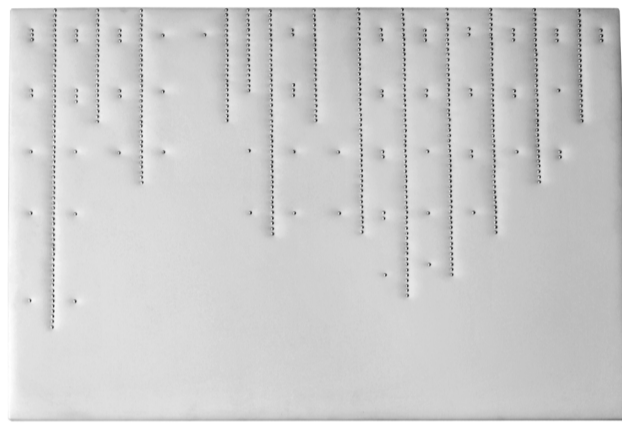
Segments Sofa
Artificial leather sofa
MH P G S 01



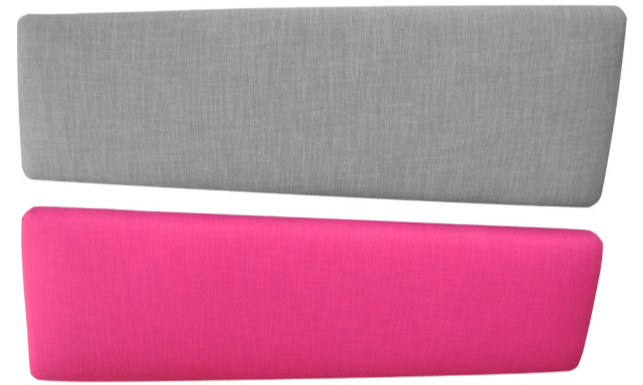
Streamline TV Unit
Grey oak natural veneer & glass panels
MH P G TVU 01



Boho-chic Headboard
Chamois fabric & green lacquered finish
MH BDH 02



Drizzle Headboard
Artificial leather with studs
MH BDH 07



Twin Headboard
Two fabric colors
MH BDH 03



Queen Cleo Artwork
Printed vinyl on MDF board
MH ART-GR1-34



Collocate Bookcase
Grey oak natural veneer
MH P G DR 01



Geo Dresser
Natural light oak veneer
MH SGH DS 01



Flash Applique
Golden brushed brass applique
MH LF AP 02



Artsy Applique
Brass
MH LF AP 06



Luminous Applique
Silver Metal applique with crystals
MH LF AP 03



Electrum Kleenex Box
Silver Metal, Copper and brass
MH AC KB 01



Stripes Headboard
Colored fabric
MH BDH 05



Commode
Grey natural oak veneer
MH P G CM 01

Fragments Bed
Artificial leather - Linen fabrics & grey oak natural veneer
MH P G B 01



Geo Dining Table
Grey oak natural veneer
MH T DT 03



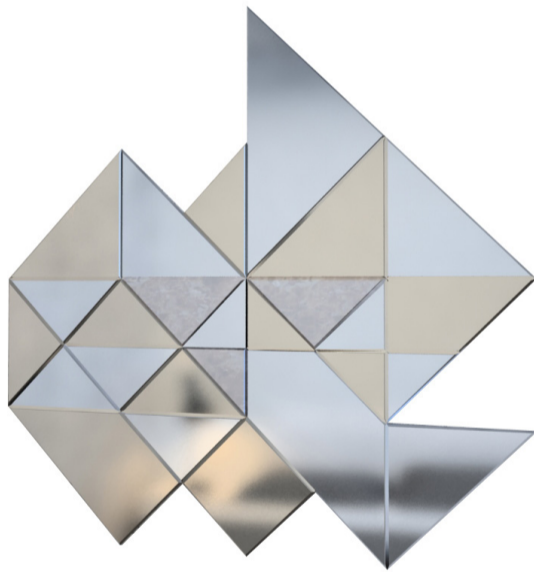
Geo Dining Chair
Grey oak natural veneer
MH CH DI 03



Sunset Tray
Copper
MH AC TR 02



Sun Tray
Brass
MH AC TR 01



Triangle Mirror
Antique mirror, Brown Mirror, Plain mirror
MH AC MI 11



Celest Mirror
Plain mirror
MH AC MI 02



Levels Mirror
Brown mirror, antique mirror & plain mirror
MH AC MI 07



Cylindrical Slits Planter
Brushed stainless steel 304 planter
MH AC P 09



Cylindrical Topaz Planter
Brushed stainless steel 304 planter with cutouts of Arabian patterns
MH AC P 08



Electrum Planter
Brass oxide planter with studs
MH AC P 01



Cylindrical Medallion Planter
Brushed stainless steel 304 planter with flower stamps
MH AC P 10

FURNISHING & FINISHING



إتجه محلي لعمل مجموعه كامله من الأثاث و الديكورات وتمنيها محليا بأعلى مستويات الجودة التي توفر لعملائنا الراحة و الوقت و المال.

و هنفرش مصري

MAHALLY FURNITURE PACKAGES: YOUR NEW HOME SOLUTION

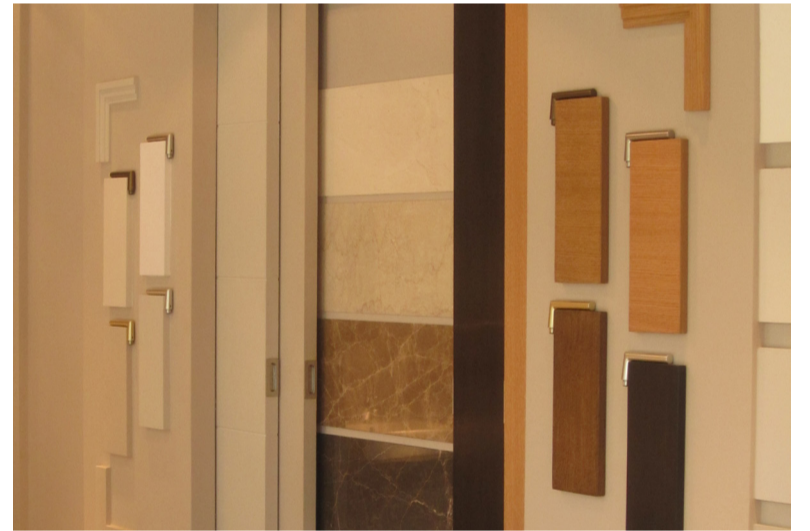
Designed to suit your home and your wallet, Mahally has created a **FURNITURE PACKAGES** line designed by our artistic designers and manufactured locally to the highest quality that provides our clients with benefits such as:

1. Furnishing your room/home from one destination.
2. Full Package flexibility.
3. More quality furniture with less money.
4. Our Packages offer you full flexibility.

Visit our website: www.mahally.net to witness this package boom for yourself.



يوجد لدى منى حسين غرفة العينات حيث يمكنك العثور على أحدث مواد و لوازم التشطيبات لإعطاء منزلك لمسة مصمم. حيث يعطي العميل إمكانية تمهول المساحات واختيار الديكور المناسب بأفضل الاسعار.



MATRIX ROOM

Searching for surfaces and textures to finish your project? Mona Hussein offers developers a **FINISHING MATRIX ROOM** for their projects where they can offer their clients the latest wall tiles, vanities, flooring material varieties, toilets, bath tubs and shower collections.

This well thought out material and surface assembly gives the client the possibility to conceptualize their spaces, and choose the best deal and look for their home.

TURN-KEY SOLUTIONS

MHDH has successfully been developing its role as a leading **DESIGN AND BUILD** line of work to deliver turn-key solutions to clients within a context that guarantees price, deadline, and quality.

This professional service of interior design and contracting specializes in residential and commercial interior design, product design, landscape design, architecture design, branding, and consultancy.

Our team is capable in providing you with the very best of design and reliable build services.

التشطيب الكامل لدي بيت تمميم منى حسين فريق عمل قادر على توفير أفضل و أسرع خدمات التسليم على المفتاح و القيام بجميع مهام الهندسة المعمارية والمقاولات والخدمات الاستشارية والتصميم الداخلي و الديكور و تمميم الحدائق و الاسطح



LIGHTING MOGUL 3 BROTHERS AND MAHALLY JOIN FORCES TO CREATE THEIR NEW 'THE ELITE LINE' FOR LIGHTING

★ LET THERE BE LIGHT

In a cheerful atmosphere with cake and smiles, a contract agreement between Mahally with Mona Hussein and 3 Brothers was signed. 3 Brothers is a leading company in manufacturing indoor and outdoor lighting systems in Egypt and the Middle East. The collaboration is very beneficial for both parties in which Mahally's creative team is to design Wall Appliques, Garden bollards, Floor lamps and Pendants to launch the 'the Elite Line' of lighting for their company. Mahally is always open for working with manufacturers in collections as this collaboration produces miracle design and technology outcomes.

في جو من البهجة تم التوقيع على عقد اتفاق بين محلى و 3 BROTHERS حديث يقوم المعممين المهوبين في محلى بعمل التمام لانظمة الإضاءة الداخلية و الخارجية لإنشاء خط إنتاج «THE ELITE LINE»



DESIGN BEAT EVENT

Design Beat event is the creation of talented minds who are all present in Designopolis. Designopolis is the one-stop destination to offer the widest array of quality furniture, furnishing items, and interior design services to accommodate to the different furnishing needs and preferences of all shoppers.

band contributions, and special displays. The event hosted 24 top design brands in Egypt who gathered to reveal their summer collection.

More similar events will be held in the future, so make sure to mark your calendar with the events coming up.

DESIGN BEAT



The first Design Beat event was held at Designopolis on the 8th of June, 2013 with the famous singer Ahmed Harfoush and free food and drinks for all guests. The event was packed with surprises, entertainment,

DESIGN BEAT هو اول حفل عقد بين جميع المعممين و اصحاب المحلات الموجهدين في ديزاينوبوليس لتقديم المفهوشات و منتجات التميميم الداخلي و مستلزمات المنزل لتقديم افضل العروض . و قد احيا الحفل الغني الشهير احمد حرفوش مع تقديم اشهى المأكولات .

SEE DESIGN FROM A DIFFERENT ANGLE.

SNEAK PEEK

WATERWAY | NEW CAIRO

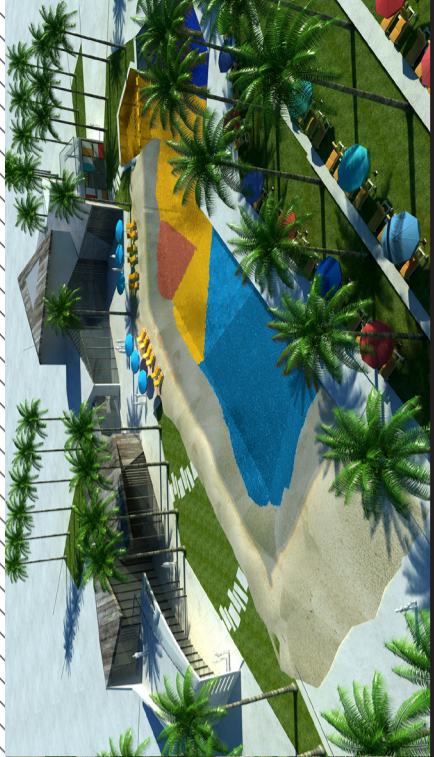


PSP OFFICE | NEW CAIRO



TURN YOUR IMAGINATION 90° CLOCKWISE

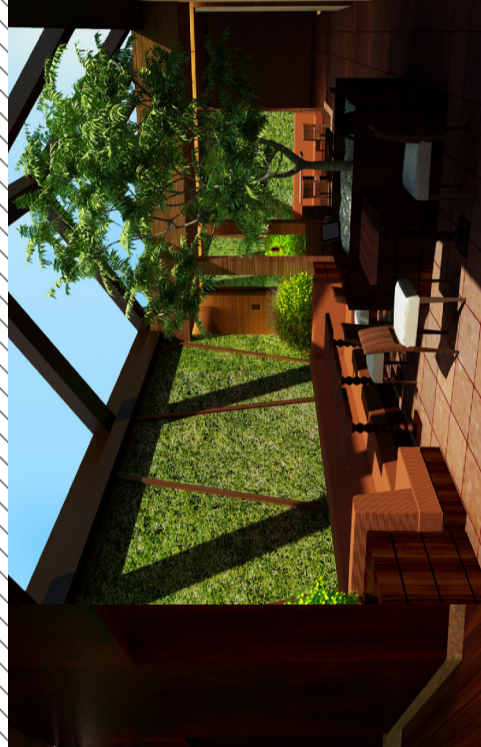
ANAYA | NORTH COAST



LULWA | ALEXANDRIA



ELEMENTS SPORTS BAR | HURGHADA



DESIGN IN EGYPT

NILLENS

NAME: NAYLA TAHAN
HER BABY: NILLENS
NILLENS WEBSITE:
WWW.NILLENS.COM

WHO IS NILLENS EXACTLY?

Nillens is modern, colorful, joyful and original. Nillens was established in 2011. We are first and foremost a bed linen and home textiles brand, but we also make loungewear and other accessories. We are 100% local, from the print designers who make our exciting patterns to the fabrics we use and the creation of our products. We only make a few of each design, we have an uncompromising approach to quality and we use the best fabric.

(We just opened our first shop in Degla Center, Zamalek and we deliver to any location in Cairo through our website.

***BRIEFLY EXPLAIN THE VARIOUS TIERS OF QUALITY IN COTTON SHEETS:**

The most important factor when looking at a cotton sheet is the thread count woven into each square inch of the fabric. Typically, the higher the thread count the denser and smoother a sheet will feel. Ofcourse, Egyptian cotton is one of the highest qualities available as it's spun into a very fine yarn allowing for higher thread counts. It's what makes Egyptian cotton extra soft.

WHAT PRODUCT RANGE DOES NILLENS OFFER?

Nillens carries the full range of bedding, including flat and fitted sheets, duvets, bed

spreads, throws and cushions. Our bedding starts at 200 thread-count cotton and goes up to 600 thread-count cotton sateen. We also produce pajamas, loungewear and other home accessories such as towels, laundry bags, bean bags and rugs.



STORE ADDRESS:
 DEGLA CENTER – GROUND FLOOR 11 HASSAN SABRY STREET, ZAMALEK

FAVORITE COLOR: BLUE
I CAN DO THIS EVERY DAY:
 PLAN A TRIP TO A PLACE I'VE NEVER BEEN TO BEFORE.
WISE WORDS: LAUGH A LOT, IT'S GOOD FOR YOU.



“ I DEDICATE ONE PAGE TO ADVERTISE FOR FREE TO PROMOTE LOCAL DESIGNS AND TALENTS ”

Monia Hussein



NAME: HEBATALLA (HAPPY)
YASSIN
HER BABY: KHADRA
KHADRA WEBSITE:
FACEBOOK.COM/KHADRAEG

FAVORITE PLANT: WISTERIA,
 IT'S A BEAUTIFUL CREEPER WITH AN INTOXICATING SCENT, AND ITS PALE LAVENDER COLOR MAKES IT VERY ROMANTIC.

I CAN DO THIS EVERY DAY:
 I'M NOT A PROFESSIONAL PHOTOGRAPHER BUT I ENJOY TAKING PICTURES OF MY PLANTS EVERYDAY TO SHARE WITH PEOPLE SO THEY CAN EXPERIENCE THE BEAUTY OF NATURE WITH ME.

WISE WORDS: IT'S NEVER TOO LATE.



FOR THOSE WHO AREN'T IN THE LOOP, WHO IS KHADRA EXACTLY?

Khadra is about nature in all its forms. Helping people develop a relationship with different kinds of plants that can either serve as beautiful eye catching piece or be functional and useful in daily life.

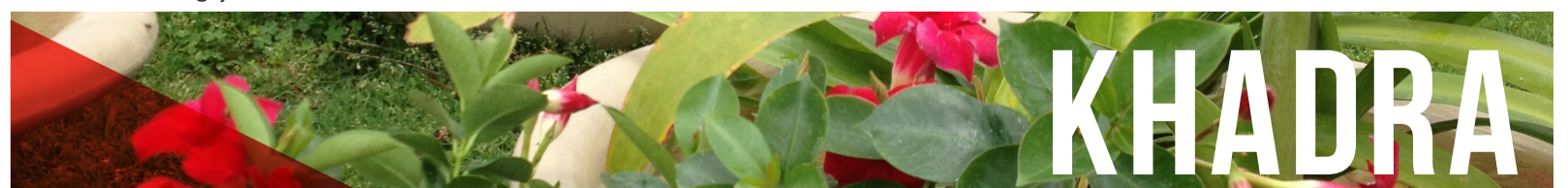
PLANTS ARE ONE OF THE OLDEST ORGANISMS ON EARTH, HOW DOES KHADRA PERCEIVE THEIR IMPORTANCE IN OUR LIVES AND OUR HOMES?

Humans want to learn again what was already part of their nature, planting. The world has found that without a greener healthier earth life will not be sustainable. Khadra believes that surrounding you self with

plants indoor and outdoor can be food for your soul.

FOR OUR CHEFS OUT THERE, WHAT HERBS DOES KHADRA HAVE TO OFFER AND HOW DIFFERENT IS IT FROM FLOWER MAINTENANCE?

Khadra offers a wide variety of herbs depending on the season, including mint, green tea, thyme, basil, bay leaf, rosemary, lemon grass, lavender, and chives. In the words of Julie Andrews, "these are a few of my favorite things!" Herbs are easier to grow, and less sensitive to their surroundings than flowers, although both are maintained the same way.



KHADRA

Anyone can present their work for the next issue; just send us your work at marketing@monahussein.com



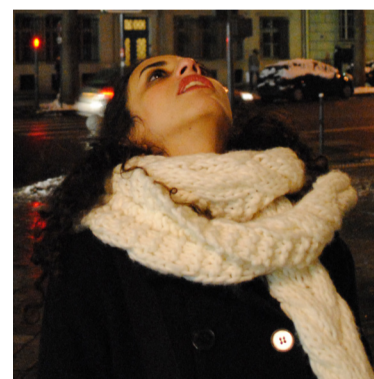
MHDH SENIOR DESIGNER HOME

Maha Amin house; a glimpse into the home of a talented designer at Mona Hussein Design House.

Simplicity and minimalism is comforting to the eye and the heart, and that's what Maha translated into her apartment interior. Temps sur temps seating areas against contrasting elements in the room is what this home is all about. The neat, minimalist and trendy style of decorating is a contemporary symbol of chicness, because less is always more.



DESIGNER TIPS: SMALL SPACES



MOHAMED NABIL

CHOOSE SLIM & COMPACT FURNITURE PIECES THAT SERVE FOR MULTIPURPOSE REASONS, LIKE EXPANDABLE DINING TABLES FOR INSTANCE. ALSO USE LARGE MIRRORS TO GIVE THE ILLUSION OF MORE SPACE.

ZEIN FAHMY

USE TINTS, TONES AND SHADES OF JUST ONE COLOR IN THE SPACE. THIS WILL GIVE YOU A FEELING OF CONTINUITY AND FLUIDITY.

DINA EISSA

CLUTTER APPEARS MORE OVERWHELMING IN SMALLER SPACES. INTEGRATE BUILT IN STORAGE IN YOUR DESIGN TO REDUCE IT. FOR EXAMPLE INSTEAD OF CHOOSING A REGULAR OTTOMAN, CHOSE ONE WITH HIDDEN STORAGE.

NOURANE ABDEL-LATIF

ANY ROOM WILL LOOK LARGER IF IT'S WELL LIT, EITHER BY NATURAL LIGHT OR ARTIFICIAL LIGHT. GET RID OF HEAVY DRAPERIES TO BRING MORE LIGHT IN.

OSAMA EL-SHAFIE

GO VERTICAL. APPLY YOUR DÉCOR UP TO THE CEILING TO GIVE HEIGHT AND ENJOY THE COZY FEELING OF YOUR SMALL IN THEORY BUT BIG IN PRACTICE SPACE.

RESIDENTIAL & COMMERCIAL



LEGENDARY SERVICES



GIGAR ROOM
To add to the idea of luxurious living the projects designers dedicated a smoking room equipped with the first cigar brands, snacks and beverages for the waterway residents and their guests.



PRIVATE CINEMA
A 12-seats private cinema is available for your private use. All you have to do is bring your movie and friends, and enjoy an evening of relaxation at your doorstep.



SPORTS GYM
A fully equipped gymnasium is available exclusively for the waterway residents. Classes and trainers will be available at your service.



VIRTUAL GAMES ROOM
The waterway residents benefit from the most up to date activities and games. Only at the waterway can play golf all year long.



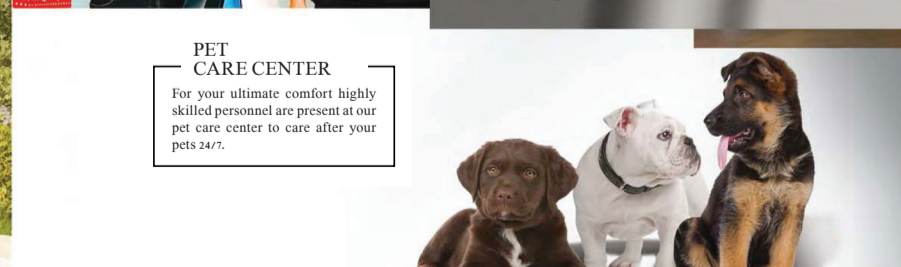
SECURITY
Around the clock security personnel are available for your ultimate security and peace of mind. An intercom system is spread across the compound from the main gates to each apartment.



GARAGE
The waterway provides each unit with a comfortable underground parking space automated garage gates and valet parking services.



THE WATERWAY MALL
The waterway development is comprised of smartly positioned retail spaces at ground and first levels. Ranges from 100 to 400 square meters in size.



PET CARE CENTER
For your ultimate comfort highly skilled personnel are present at our pet care center to care after your pets 24/7.

THE LUXURY YOU DESERVE